



LEOPARD 24

Builder:	Leopard
Model:	24
Type:	Open
Dimensions:	24m00 x 6m00
Localization:	Cannes, St Tropez, Monaco
Year:	2005
Engine:	MTU 2000M91
Power:	2 x 1500 hp
Propulsion:	Diesel with shaft
Cabins:	3
Reference:	DLB0238





Electricity

Generator

Airconditioning/Heating

Airconditioning

Airconditioning (reverse cycle)

Tv/Radio/Telephone

TV/ DVD

Satellite TV

Canvas/Covers

Foredeck sunbed cushions

Deck Fittings

Hardtop with electric sliding sunroof

Electro-hydraulically opening garage with storage for tender

Electro-hydraulic telescopic gangway

Teak cockpit deck

Cockpit wet bar

Large bathing platform

Cockpit table

Tender/Safety

Safety equipment

Life raft

Tender

Other informations: - Tender RH 350 Novamarine Jet 160hp

- Jet Ski gp 800 Yamaha

Layout

Cabin with large double bed

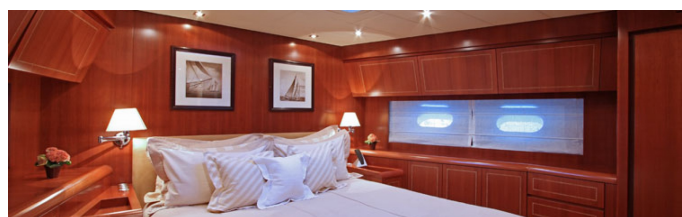
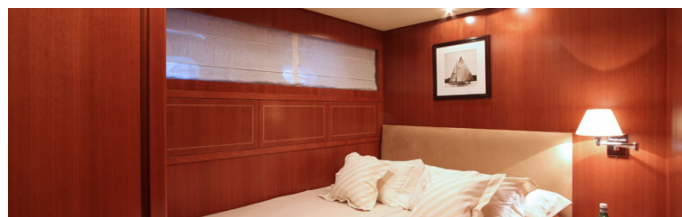
- *Number: 2*

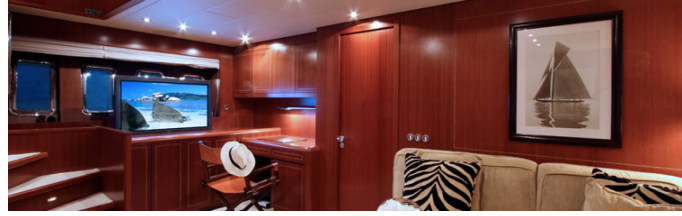
Cabin with twin single berths

Toilet compartment with shower

- *Number: 3*

Saloon





Tenders and Toys

Jetski

- Brand: Yamaha , Number: GP800

Tender

- Brand: Novamarine , Model: RH 350 , Power: 160 hp

Wakeboard

Water skis equipment



Price

4 500 € excl VAT / jour

Other informations

Based in the French Riviera, this stunning Leopard 24M is the ideal yacht for day charter in Cannes Monaco or Saint Tropez .

She can accommodate 6 guests in 3 all ensuite cabins and up 12 guests cruising.

Contact us for any information regarding the charter of a Leopard 24M

The above details are given in good faith. They do not form part of any offer or contract. Boat available subject to remaining available