



PRINCESS 95

Builder:	Princess
Model:	95
Type:	Flybridge
Dimensions:	29m33 x 7m04
Localization:	France, CÃ´te d'azur
Year:	2008
Engine:	MTU
Power:	2 x 2400 hp
Propulsion:	Diesel with shaft
Cabins:	4
Reference:	DLB0207





Airconditioning/Heating

Airconditioning (reverse cycle) in saloon and cabins

Tv/Radio/Telephone

TV/ DVD

Satellite TV

Stereo Radio/CD



Interior

Leather upholstery in saloon

Canvas/Covers

Foredeck sunbed cushions

Flybridge sunbed

Bimini top



Deck Fittings

Electro-hydraulic telescopic gangway

Teak side, cockpit and flybridge decks

Large bathing platform

Transom door leading to bathing platform

Hot and cold transom shower

Cockpit table



Tender/Safety

Life raft

Layout

Cabin with large double bed

- *Number: 3*

Cabin with twin single berths

Toilet compartment with shower

- *Number: 4*

Saloon

Navigation

Stabilizers



Tenders and Toys

Tender

- Brand: Zodiac , Length: 5.5m

Snorkeling equipment

Wakeboard

Water skis equipment

Seabob

Price

60 000 € excl VAT / semaine

Other informations

As the new flagship to the flybridge range, the Princess 95 Motor Yacht is a particularly significant yacht, demonstrating refreshingly new standards in interior design and an excellence of construction and engineering that matches the finest yachts afloat.

Rent a Yacht Princess

Her hull design represents the latest thinking from Olesinski and is driven through a quest for practicality of function as well as performance and beauty. This latest modified deep V hull delivers outstanding performance and a genuine long range cruising capability.

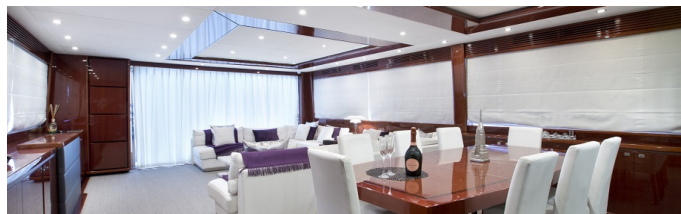
The expansive flybridge deck, generous staterooms, full width saloon and dining area are elegant in style and take the pleasures of extended cruising to an entirely new level. Stepping inside her saloon, the scale of the yacht takes on a new significance. The combination of beam, height and the light fresh Mediterranean-inspired design, lends itself to a striking sense of volume and spaciousness. Sweeping windows span the saloon and dining area, which enhance the yacht's open layout with a dramatic and almost uninterrupted panoramic outlook. Below deck features a combination of contemporary styling and uncompromising interior design. The generous staterooms provide superb living space for an extended stay.

The sophisticated blend of classic looks with a contemporary edge, beautiful fittings and class leading performance give the Princess 95 Motor Yacht an undeniable presence befitting the new Princess flagship.

Launched in 2008, this Princess 95 has proved to be a very successful yacht and has received fantastic feedback from repeat and previous client

Summer 2017 High Rate: 60000 EUR per week

Summer 2017 Low Rate: 54000 EUR per week



The above details are given in good faith. They do not form part of any offer or contract. Boat available subject to remaining available

